



# STIC Doctoral School Online Welcome Meeting

November, 19th 2020





- Presentation of the STIC Doctoral School
- Presentation by the doctoral student representatives
- Courses and training

# The Doctoral School





# Sciences and Technologies of Information and Communication

One of the **20 Doctoral  
Schools** of

**université  
PARIS-SACLAY**

Agriculture, alimentation,  
biologie, environnement, santé  
(ABIES)

[Read more](#)

Astronomie et astrophysique  
d'Ile-de-France

[Read more](#)

Cancérologie, Biologie,  
Médecine, Santé

[Read more](#)

Ecole doctorale de  
mathématiques Hadamard  
(EDMH)

[Read more](#)

Ecole Doctorale Ondes et  
Matière

[Read more](#)

Ecole doctorale Physique en Ile  
de France

[Read more](#)

Electrical, Optical, Bio:  
PHYSICS\_AND\_ENGINEERING  
(EOBE)

[Read more](#)

Innovation thérapeutique du  
fondamental à l'appliqué

[Read more](#)

Interfaces

[Read more](#)

Particles, Hadrons, Energy,  
Nuclei, Instrumentation,  
Imaging, Cosmos et Simulation  
(PHENIICS)

[Read more](#)

Santé Publique

[Read more](#)

Sciences Chimiques : Molécules,  
Matériaux, Instrumentation et  
Biosystèmes (2MIB)

[Read more](#)

Sciences de l'environnement  
d'Ile-de-France

[Read more](#)

Sciences de l'Homme et de la  
Société ED SHS

[Read more](#)

Sciences du sport, de la  
motricité et du mouvement  
humain (SSMMH)

[Read more](#)

Sciences du végétal : du gène à  
l'écosystème

[Read more](#)

Sciences et technologies de  
l'information et de la  
communication (STIC)

[Read more](#)

Sciences mécaniques et  
énergétiques, matériaux et  
géosciences - SMEMAG

[Read more](#)

Signalisations et réseaux  
intégratifs en biologie  
(BIOSIGNE)

[Read more](#)

Structure et dynamique des  
systèmes vivants

[Read more](#)

# ED STICS's institutions and research labs (2020-2024)



**université  
PARIS-SACLAY**

**6 components**



**5 national organisms**

**FACULTÉ  
DES SCIENCES  
D'ORSAY**



**26 research units**



**MIA Paris**

**université  
PARIS-SACLAY** | ÉCOLE DOCTORALE  
Sciences et technologies  
de l'information et de  
la communication (STIC)



## **S**ciences and **T**echnologies of **I**nformation and **C**ommunication

- 468 PhD students in 2019-2020 (about 5500 in Paris-Saclay globally)
- Nationalities and languages :
  - 55% come from abroad
  - 35% come from a country where French is not an official or used language.
- 340 PhD supervisors (HdR)

# The roles of the STIC Doctoral School in a nutshell



The doctoral school is mainly to **ensure that the PhD goes well from the beginning to the end.**

It **coordinates** actors and processes for :

- Recruiting
- Registration, registration renewal
- Follow up (and help if problems occur)
- Training
- Support for thematic schools and international mobility
- PhD Defense
- Preparing the professional career

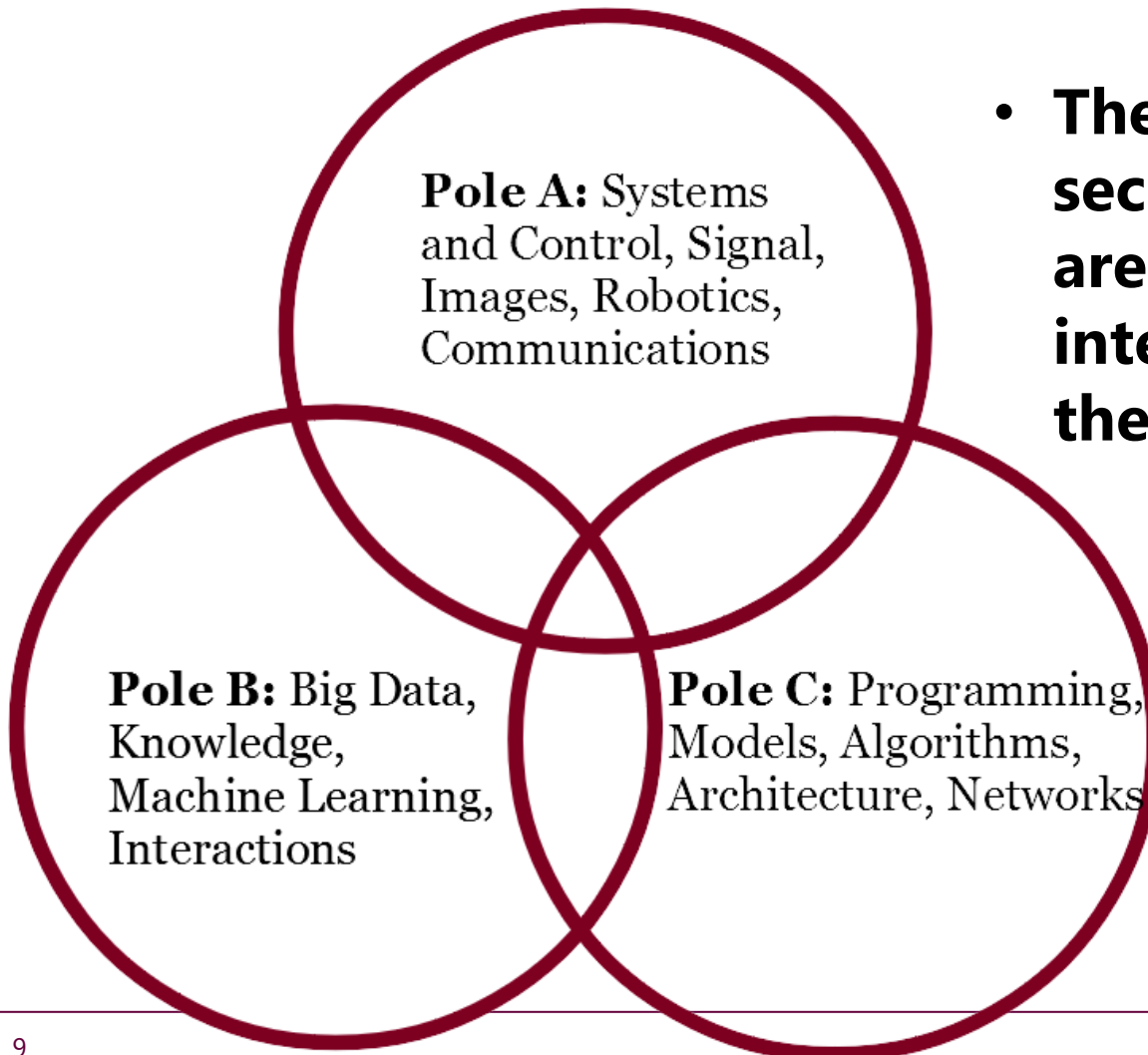
# From the PhD student point of view



Each PhD student of the STIC DS

- works (generally) in a **laboratory** which is associated to the STIC DS
- under the supervision of a **researcher** from that laboratory (generally),
- is registered in **Paris-Saclay University**
- Belongs to a **Graduate School** of the university (either **Computer Science** or **Engineering and Systems Sciences**)
- belongs to one **Scientific Pole** of the STIC DS (generally – but not always - the one of his/her supervisor).





- **The director and the secretary of your pole are your natural interlocutors within the STIC DS.**



Director: **Antoine BERTHET**  
Assistant: **Anne BATALIE**  
Email: **poleAstic@lri.fr**

**Pole A:** Systems  
and Control, Signal,  
Images, Robotics,  
Communications

Director: **Anne VILNAT**  
Assistant: **Stéphanie DRUETTA**  
Email: **poleBstic@lri.fr**

**Pole B:** Big Data,  
Knowledge,  
Machine Learning,  
Interactions

Director: **Nadjib AIT SAADI**  
Assistant: **Fatimata DIACKO**  
Email: **poleCstic@lri.fr**

**Pole C:** Programming,  
Models, Algorithms,  
Architecture, Networks

# STIC Doctoral School

## Scientific Domain Based Organization



### POLE A

**Systems & Control, Signal,  
Image, Robotics, Communications**

**Director:** Antoine Berthet  
**Assistant:** Anne Batalie  
**Email:** [poleAstic@lri.fr](mailto:poleAstic@lri.fr)





### POLE B

**Data, Knowledge, Machine Learning and Interactions**

**Director:** Anne Vilnat  
**Assistant :** Stéphanie Druetta  
**Email :** [poleBstic@lri.fr](mailto:poleBstic@lri.fr)



# STIC Doctoral School

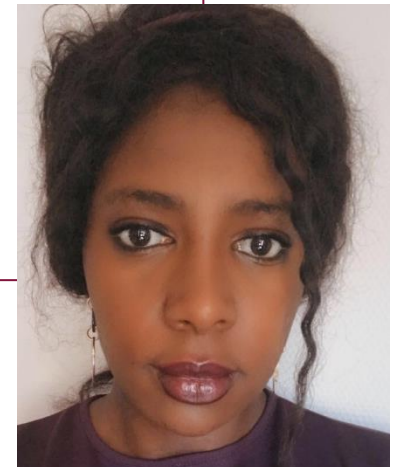
## Scientific Domain Based Organization



### POLE C

**Programming, Models, Algorithms,  
Architecture, Networks**

**Director:** Nadjib Ait Saadi  
**Assistant:** Fatimata Diacko  
**Email:** [poleCstic@lri.fr](mailto:poleCstic@lri.fr)



# STIC Doctoral School

## General direction, training, industry, international

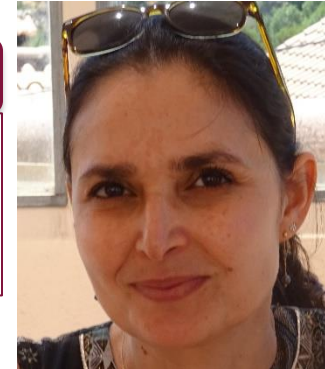


### Direction

**Alain DENISE**

**Stéphanie DRUETTA** - Assistant

Email: [edstic@lri.fr](mailto:edstic@lri.fr)



### Training

**Hanna KLAUDEL**

**Noémie MOUTTY** - Assistant

Email: [formation-edstic@lri.fr](mailto:formation-edstic@lri.fr)



### International & Industry

**Véronique VEQUE**

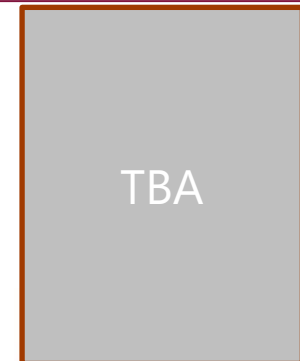
Email: [international-edstic@lri.fr](mailto:international-edstic@lri.fr)

Email: [industriel-edstic@lri.fr](mailto:industriel-edstic@lri.fr)

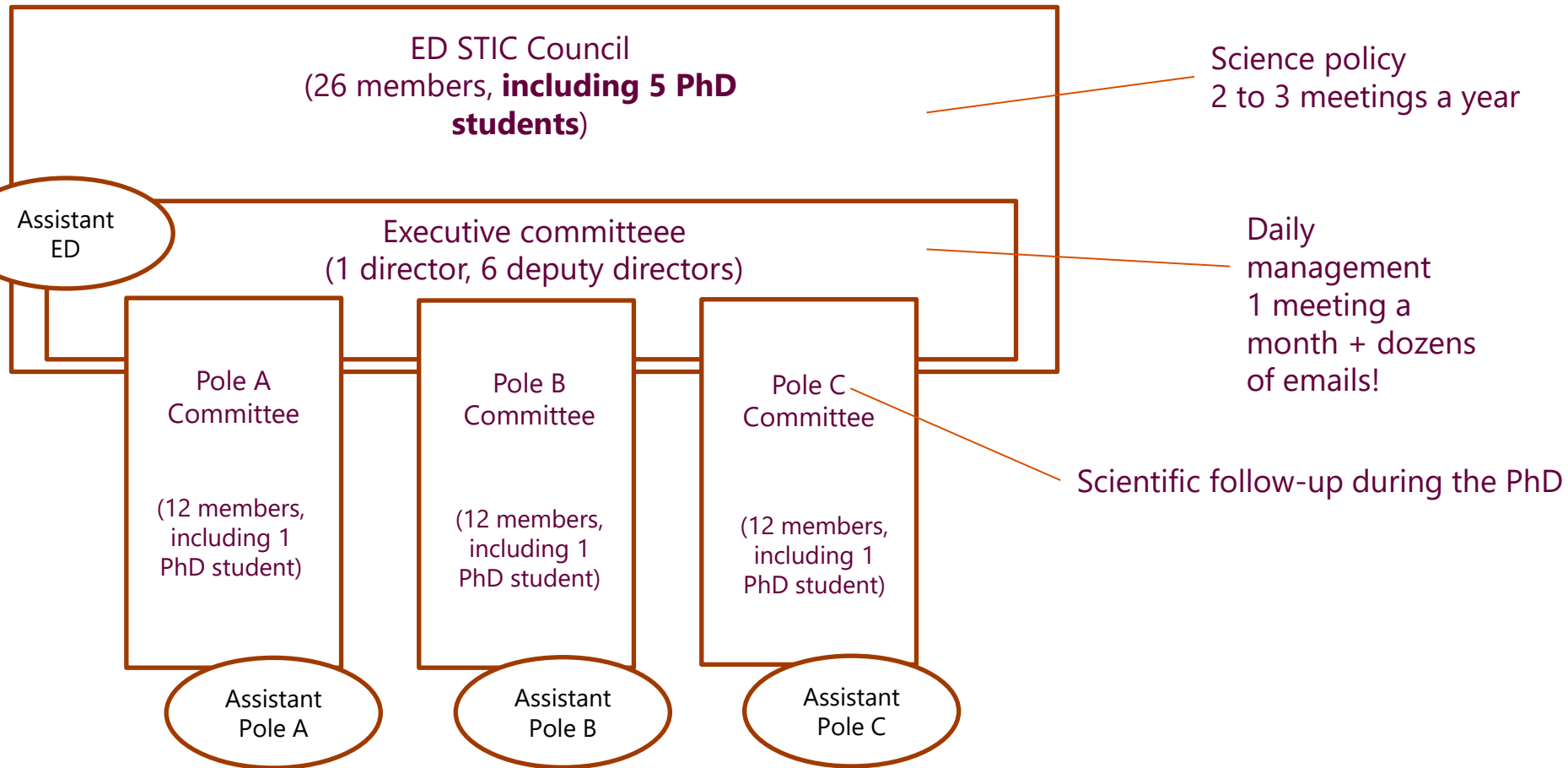


### Budget

**TBA**



# Council and Executive Committee



# Election on the PhD representatives



- 5 representatives, elected for 1 year
- All are members of the ED STIC Council
- Three of them are members of a pole committee
  
- Election in january
- You will receive an email about the organization of the election.
  
- *There will also be another election process, for the Graduate School councils. You will also receive an email about it.*



# Current PhD representatives



- Eugénie Brasier (pole B)
  - Mohammad Alaul Islam (pole B)
  - Alexandrina Korneva (pole C)
  - Dario Penco (pole A)
  - Rebecca Zucchini (pole C)
- 
- Email : **rep-doc-edstic@lri.fr**

# The PhD project





- Standard duration : **3 years**
- The 4th year registration is allowed only on exemption.
- Funding must be insured during the whole duration.
- Your PhD supervisor and yourself must **anticipate** these requirements.



- Some PhDs are carried out in international cotutelle:
  - One supervisor in each country
  - Alternating periods between the two countries
  - Double diploma (from both universities)
- Some others are carried out in an industrial context:
  - One academic supervisor, one industrial supervisor
  - Alternating periods between the two locations

# The PhD Thesis is a project with several actors



- **PhD student:** conducts supervised research activities
- **Thesis supervisor:** supervises the doctoral student
- **Director of the laboratory:** ensures the material reception of the doctoral student
- **Doctoral school (via the pole):** carries out his/her follow-up, defines the doctoral training program, organizes the registration / re-registration and defense procedures, intervenes for any question during the thesis (in particular: health problems, conflicts).

# The PhD Student (You!)



## You :

- You are **both a student and a researcher**.
- You **work under the supervision of your supervisor(s)**, you communicate with him/her/them regularly.
- You possibly teach.
- You work in a **local context** (research group, laboratory), and also in **national and international contexts** (researchers in your domain).
- You **communicate your research results** to other researchers, in seminars or workshops (local, national, international).
- You **publish your results** in international journals and/or conferences.
- At the end **you write your thesis**, and finally **you defend it**.



## Your PhD supervisor :

- **ensures your remuneration** during the whole duration of the PhD
- **supervises your work**, communicates with you regularly, discusses about the thesis advancement advises you.
- **provides the needed resources** for the accomplishment of the PhD project.
- **advises you about useful courses** for your PhD project.
- **encourages you and helps you to present and publish** your work.
- **advises you** for the **writing of your manuscript** and in the **preparation of the defense**.

# Follow up by the STIC Doctoral school



- **1st year:** a **referent** (a researcher who does not work in your research group) is designated for each of you. He or she takes care of your working conditions. He or she has to write a short report before your registration in 2<sup>nd</sup> year.
- **2nd year:** **mid-term evaluation**, by a scientific committee (at least two researchers: one from the pole committee, one from another university).
- **3rd year:** meeting with the **pole director**.
- **At the end of each year**, you must write a (short) **report** and fill an **auto-evaluation form** before registration.



# In case of any problem



**The Doctoral School is here to help you** in any case, especially in case of problems (conflicts, health problems etc.) :

- The pole director (and the DS director)
- The referent
- The PhD student representatives

**In particular, during the pandemic and confinement period, do not stay isolated in case of any problem. Your PhD supervisor can help you, but we also are here in any case.**



- **Useful links:**

- ADUM (where your account for registration, training etc. is): [www.adum.fr](http://www.adum.fr)

- The STIC pages on the Paris-Saclay web site:

- <https://www.universite-paris-saclay.fr/ecoles-doctorales>

- **Emails:**

- **read carefully the emails** from ADUM and from your pole. They are sent to the email address you wrote in ADUM.

- To send an email to your pole (director and assistant) : [poleXstic@lri.fr](mailto:poleXstic@lri.fr), where **X=A, B or C**.

# Last Recommendations



**FOCUS ON YOUR GOALS  
AND ENJOY YOURSELF !**

**Next meeting (hopefully) in  
spring, face-to-face, with scientific  
presentations by the 2020 STIC  
Doctoral Prize winners.**



STIC DOCTORAL SCHOOL

# Goodbye!

# Enjoy your PhD!

# Enjoy your life!

Today's presentations will be available on  
the doctoral school's web site

