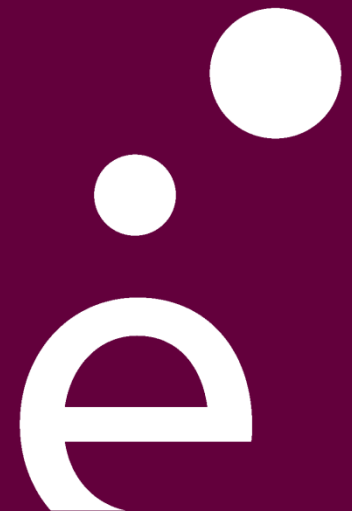




STIC Doctoral School Welcome Meeting

November, 28th 2019

CentraleSupélec





8:30 Welcoming coffee

9:00 Doing a PhD at the ED STIC Paris-Saclay

- general presentation
- courses and training
- doctoral representatives
- Science Accueil organization

11:00 Break

11:30 Awards Ceremony,

with Mérouane Debbah (Huawei – CentraleSupélec)

13:15 - Lunch

The Doctoral School



Paris-Saclay University



15 institutions: 3 universities, 5 « grandes écoles », 7 national research organisms, 1 associated IRT (Institute of Research and Technology)



Comprendre le monde,
construire l'avenir





Sciences and Technologies of Information and Communication

One of the **20 Doctoral Schools** of Paris Saclay University

Agriculture, alimentation, biologie, environnement, santé (ABIES)

[Read more](#)

Astronomie et astrophysique d'Ile-de-France

[Read more](#)

Cancérologie, Biologie, Médecine, Santé

[Read more](#)

Ecole doctorale de mathématiques Hadamard (EDMH)

[Read more](#)

Ecole Doctorale Ondes et Matière

[Read more](#)

Ecole doctorale Physique en Ile de France

[Read more](#)

Electrical, Optical, Bio: PHYSICS_AND_ENGINEERING (EOBE)

[Read more](#)

Innovation thérapeutique du fondamental à l'appliqué

[Read more](#)

Interfaces

[Read more](#)

Particles, Hadrons, Energy, Nuclei, Instrumentation, Imaging, Cosmos et Simulation (PHENIICS)

[Read more](#)

Santé Publique

[Read more](#)

Sciences Chimiques : Molécules, Matériaux, Instrumentation et Biosystèmes (2MIB)

[Read more](#)

Sciences de l'environnement d'Ile-de-France

[Read more](#)

Sciences de l'Homme et de la Société ED SHS

[Read more](#)

Sciences du sport, de la motricité et du mouvement humain (SSMMH)

[Read more](#)

Sciences du végétal : du gène à l'écosystème

[Read more](#)

Sciences et technologies de l'information et de la communication (STIC)

[Read more](#)

Sciences mécaniques et énergétiques, matériaux et géosciences - SMEMAG

[Read more](#)

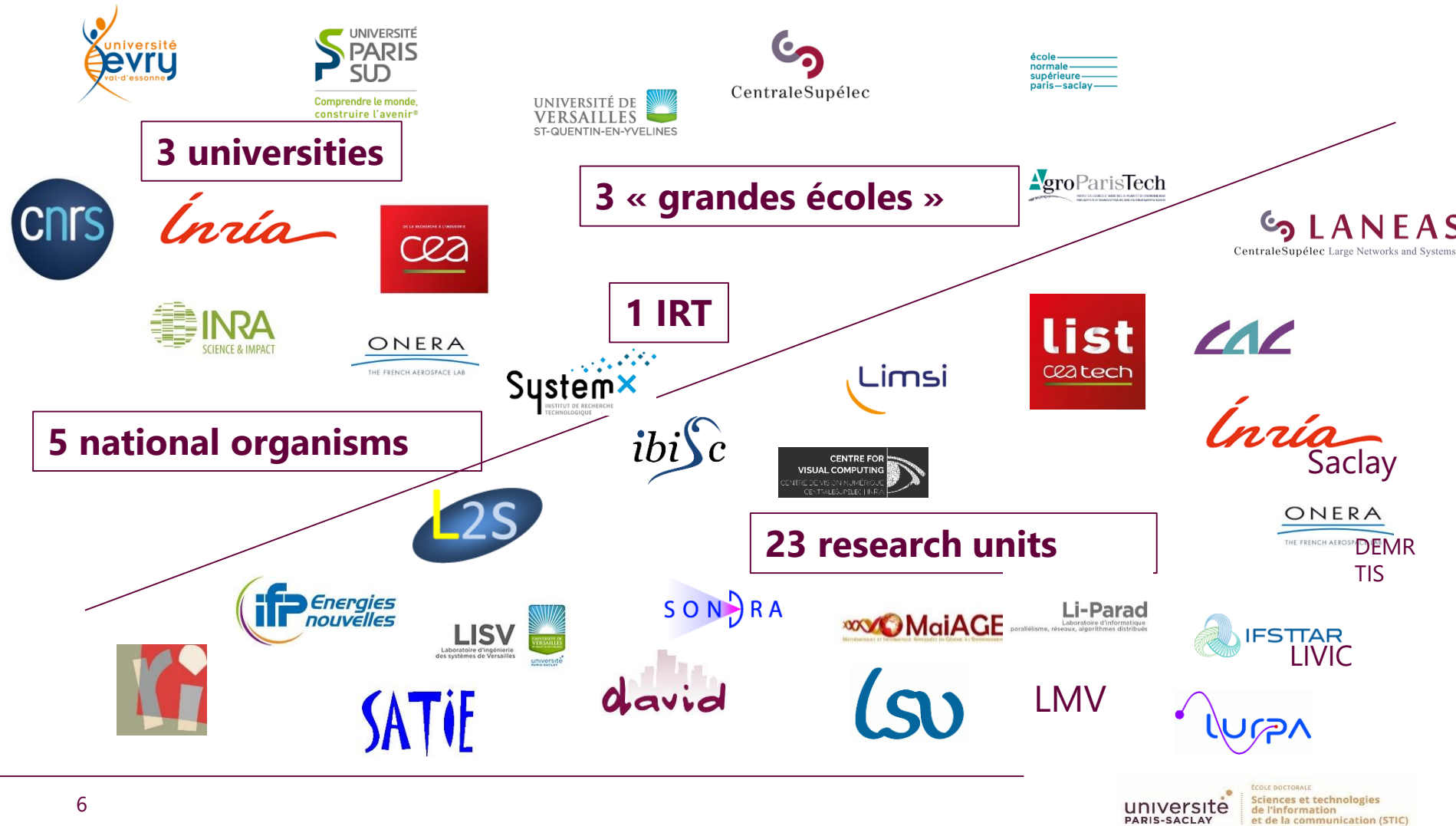
Signalisations et réseaux intégratifs en biologie (BIOSIGNE)

[Read more](#)

Structure et dynamique des systèmes vivants

[Read more](#)

Institutions and research labs (2020-2024)





Sciences and **T**echnologies of **I**nformation and **C**ommunication

One of the **20 Doctoral Schools** of **Paris Saclay University**

- 479 PhD students in 2018-2019
- Nationalities and languages (2018-2019)
 - 57% come from abroad
 - 34% come from a country where French is not an official or used language.
- 298 PhD supervisors (HdR)

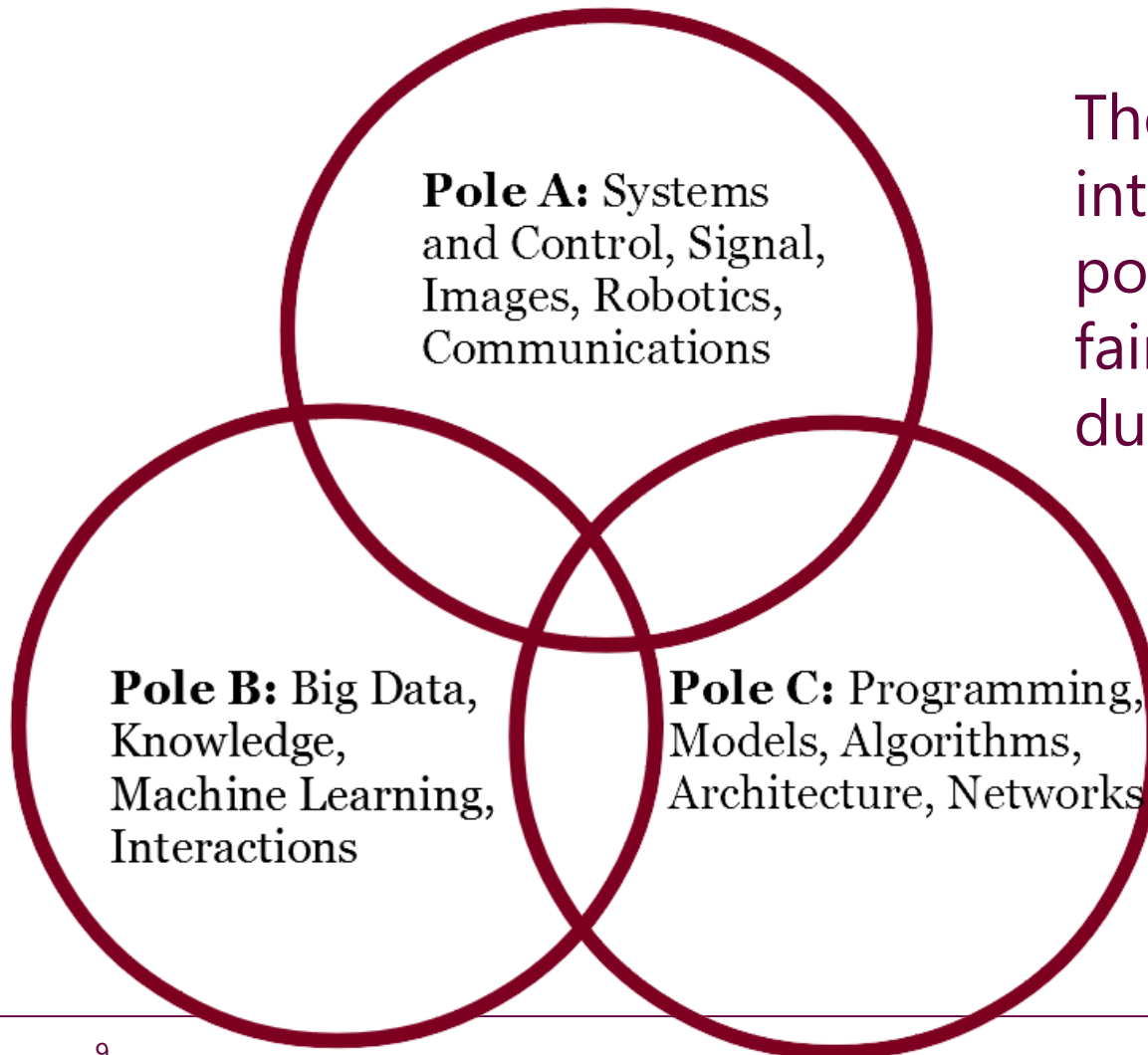
The roles of the STIC Doctoral School in a nutshell



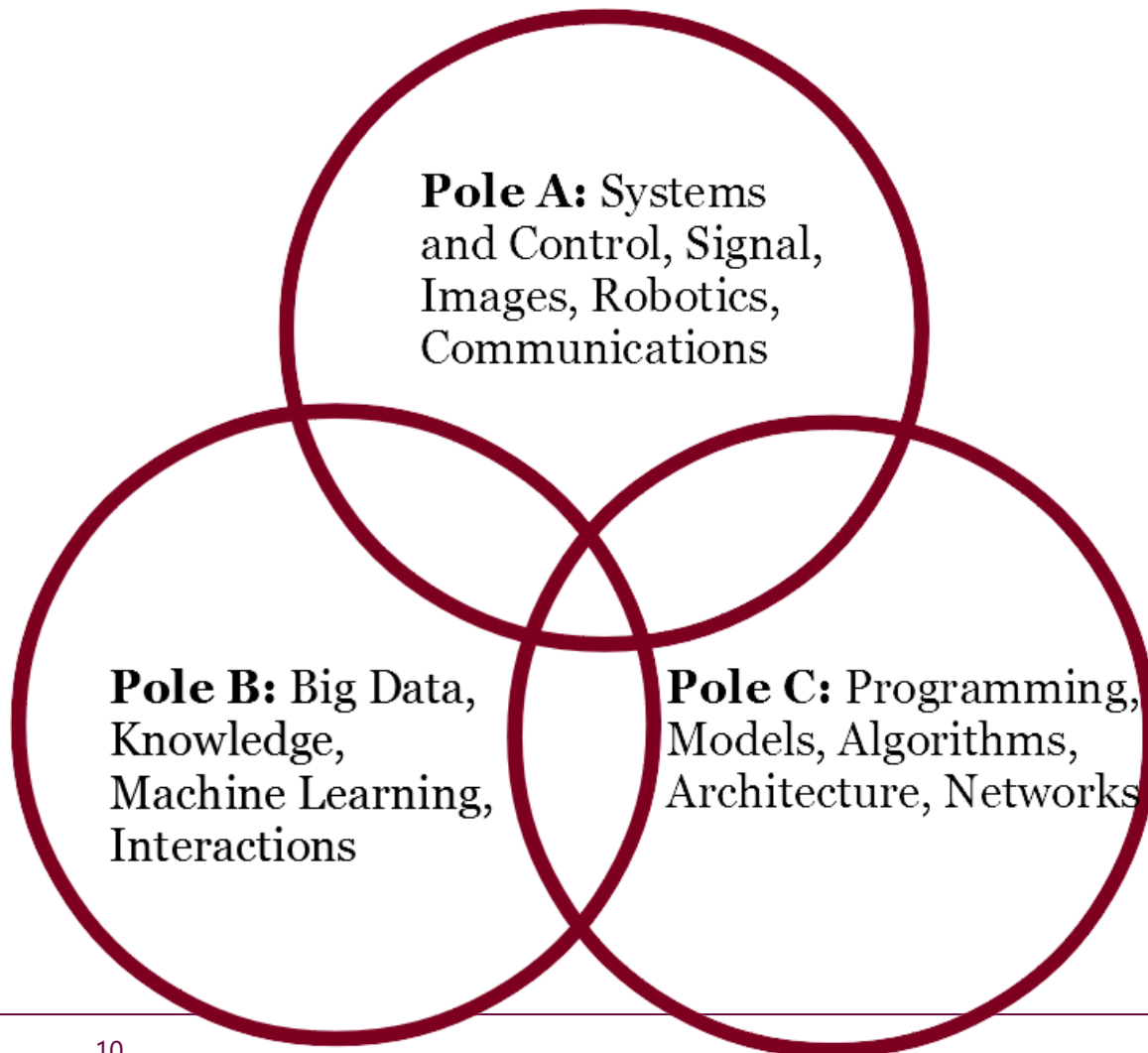
The DS is mainly to **ensure that the PhD goes well** from the beginning to the end.

It **coordinates** actors and processes for :

- Recruiting
- Registration, Registration renewal
- Follow up (and help if problems occur)
- Training
- Support for thematic schools and international mobility
- PHD Defense
- Professional Carrier



The organization in three interconnected scientific poles ensure a good and fair scientific follow-up during all the PhD thesis.



NB : in fact, until the end of 2019, there are 4 poles numbered 1, 2, 3, 4.

1 → A

2 → A/C (mainly)

3 → B

4 → C

Thanks to Alain Sibille and Florence Besnard (pôle 2)!

From the PhD student point of view

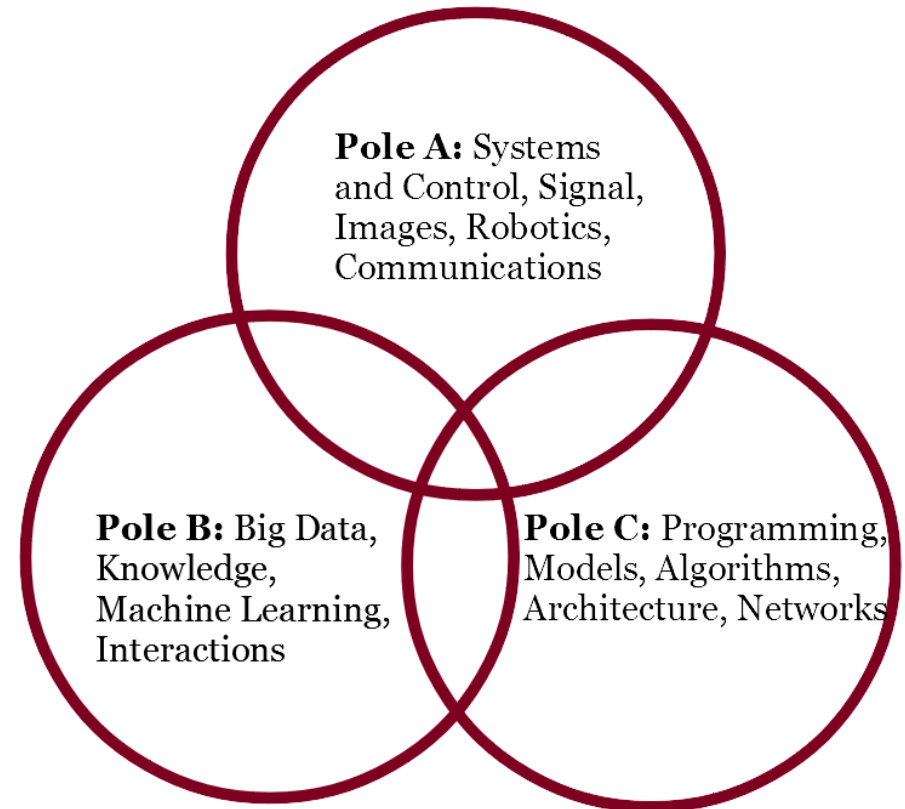


Each PhD student of the STIC DS

- works (generally) in a **laboratory** which is associated to the STIC DS
- under the supervision of a **researcher** from that laboratory (generally),
- is registered in one **institution** (either university or « grande école »),
- belongs to one **scientific pole** of the STIC DS (generally – but not always - the one of his/her supervisor).



- The organisation in thematic poles ensures a fair scientific follow-up of the thesis by the STIC DS.
- Whatever your location and your pole, same processes apply for: recruiting, registration, training, support, defense, etc.
- **The director and the secretary of your pole are your natural interlocutors within the STIC DS.**



STIC Doctoral School



Director: **Gilles DUC/Antoine BERTHET** (2020)
Assistant: **Anne BATALIE**
Email: poleAstic@lri.fr

Pole A: Systems
and Control, Signal,
Images, Robotics,
Communications

Director: **Anne VILNAT**
Assistant: **Stéphanie DRUETTA**
Email: poleBstic@lri.fr

Pole B: Big Data,
Knowledge,
Machine Learning,
Interactions

Director: **Leïla KLOUL**
Assistant: TBA
Email: poleCstic@lri.fr

Pole C: Programming,
Models, Algorithms,
Architecture, Networks



POLE A

**Systems & Control, Signal,
Image, Robotics, Communications**

Director: Gilles Duc/Antoine Berthet – CentraleSupélec

Assistant: Anne Batalie

Email: poleAstic@lri.fr



POLE B

**Data, Knowledge, Machine Learning and
Interactions**

Director: Anne Vilnat – UPSud
Assistant : Stéphanie Druetta
Email : poleBstic@lri.fr



POLE C

**Programming, Models, Algorithms,
Architecture, Networks**

Director: Leïla Kloul – UVSQ
Assistant: TBA
Email: poleCstic@lri.fr

STIC Doctoral School

Scientific Domain Based Organization



Direction

Alain DENISE – UPsud
Stéphanie DRUETTA - Assistant
Email: edstic@lri.fr

Training

Hanna KLAUDEL – UEVE
Email: formation-edstic@lri.fr

International & Industry

Véronique VEQUE – UPSud
Email: international-edstic@lri.fr
Email: industriel-edstic@lri.fr

Director: **Gilles DUC** / **Antoine BERTHET** (2020)
Assistant: **Anne BATALIE**
Email: poleAstic@lri.fr

Pole A: Systems and Control, Signal, Images, Robotics, Communications

Director: **Anne VILNAT**
Assistant: **Stéphanie DRUETTA**
Email: poleBstic@lri.fr

Pole B: Big Data, Knowledge, Machine Learning, Interactions

Director: **Leïla KLOUL**
Assistant: TBA
Email: poleCstic@lri.fr

Pole C: Programming, Models, Algorithms, Architecture, Networks



To prepare a PhD in both countries

Double Diploma

➔ International cotutella agreement
between Paris-Saclay and a foreign University
signed by all parties

- Doctoral project
- Supervisors in each country
- Alternating periods
- Defence of thesis: jury, organization, place...

International Cotutelle Process



1. The supervisor provides online information on this [interface](#)
Online application for an international cotutella agreement

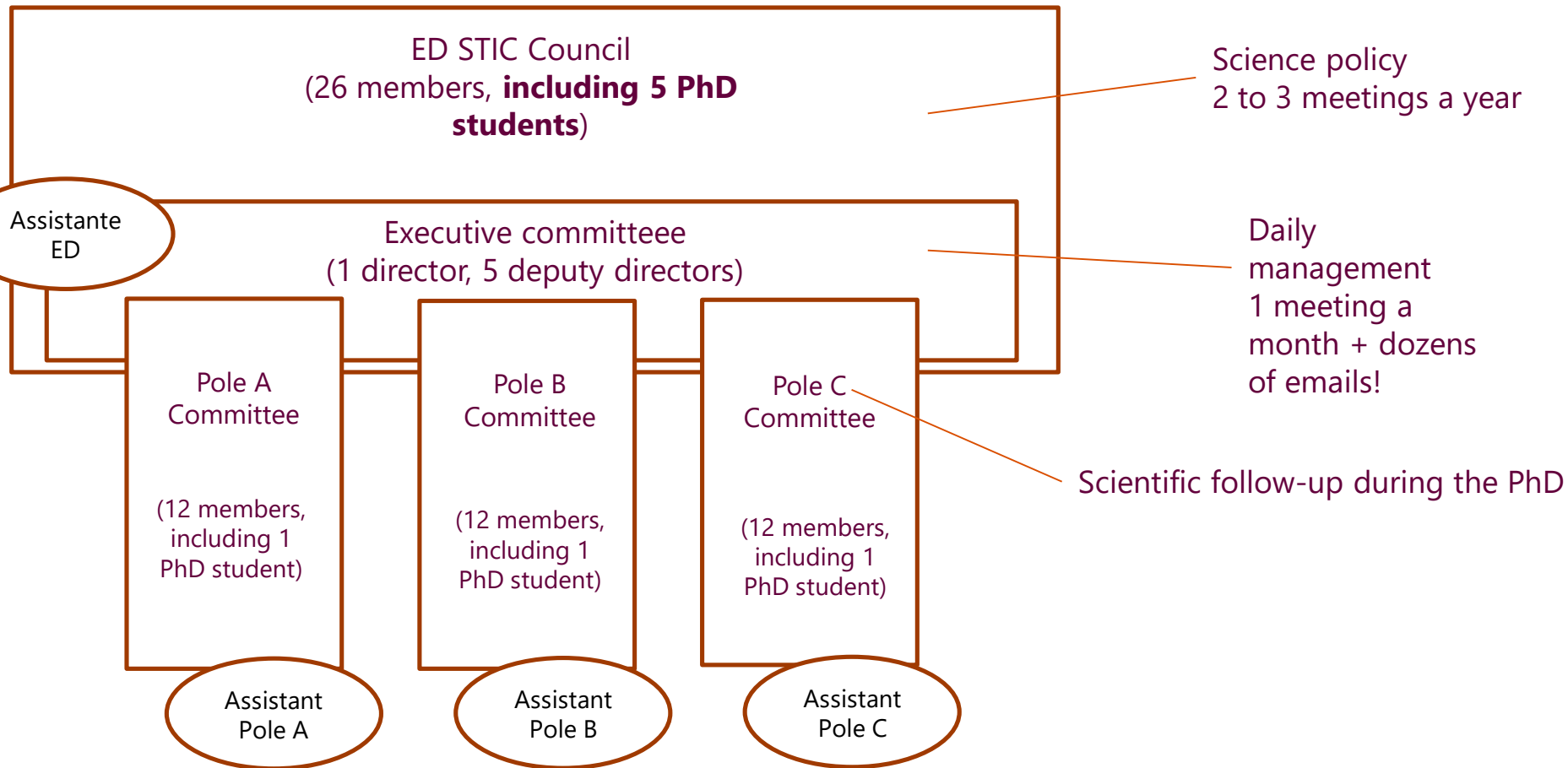
This demand is sent to all actors (ED, lab, supervisor,...)

2. We check the demand and some details are often requested:
 1. Periods in each country (at least one year here)
 2. Training programs
 3. Jury
3. Advisor for International Cotutelle in Paris-Saclay will contact the correspondent of the partner institution abroad to prepare the draft of the international cotutella agreement
4. Approbation by all the parties and signature



Before end
of 2nd year

Council and Executive Committee



Election on the PhD representatives



- 5 representatives, elected for 1 year
- All members of the ED STIC Council
- 3 of them are members of a pole committee

- Election in january
- You will soon receive an email about the organization of the election.

The PhD project





- Standard duration : **3 years (36 months)**.
- The 4th year registration is allowed only on exemption.
- Funding must be insured during the whole duration.
- Your PhD supervisor and yourself must **anticipate** these requirements.

The PhD Thesis is a project with several actors



- **PhD student:** selects a thesis subject, conducts supervised research activities, publishes the work after agreement of the thesis supervisor, writes his manuscript and presents his work
- **Thesis supervisor:** defines the subject of the thesis and supervise the doctoral student; intervenes directly for any question related to the progress of the thesis
- **Director of the laboratory:** validates the subject from a scientific point of view, ensures the material reception of the doctoral student
- **Direction of the doctoral school (via the pole):** ensures the material conditions of the doctoral student, carries out his follow-up, defines the doctoral training program, organizes the registration / re-registration and defense procedures, intervenes for any question during the thesis (in particular: health problems, conflicts).
- **Direction of the university or *grande école* :** takes decisions on the basis of what has been transmitted

Role of the PhD supervisor



- Ensures remuneration of his PhD students during the whole duration of the PhD
- Elaborates the PhD project in cooperation with the PhD student
- Ensures a frequent and regular follow-up of the thesis advancement
- Provides the needed resources for the accomplishment of the PhD project
- Encourages the PhD student to attend useful courses for his PhD project
- Commits to help the PhD student preparing the rest of his career
- Incites and helps the PhD student to publish his work
- Advices the PhD student for the writing of the manuscript and the preparation of the defense
- Proposes the two reviewers for the manuscript and the jury's members for the defense

Follow up by the STIC Doctoral school



- **1st year:** a **referent** (a researcher who does not work in your research group) is designated for each of you. You must meet him/her (at least once) at the end of the 1st year, before your registration in 2nd year.
- **2nd year: mid-term evaluation**, by a scientific committee (at least two researchers: one from the pole committee, one from another university).
 - **Scientific report** (10 pages) + future work + training + professional project
 - **Oral presentation** and discussion with the committee
- **3rd year:** meeting with the **pole director**.
- **At the end of every year**, you must write a (short) **report** and fill an **auto-evaluation form** before registration.



The Doctoral School is here to help you in any case, especially in case of problems (conflicts, health problems etc.) :

- The pole director (and the DS director)
- The referent
- The PhD student representatives

Many things that have'nt been addressed



- **After the PHD**
 - another meeting in March (2nd year)
- **Social PHD life**
 - PhD representatives
 - Phd student organizations
 - Scientific organisations
- **Events**
 - PHD seminars, industrial meetings...
 - **Paris-Saclay Graduation Ceremony**





- **Very useful links:**
 - ADUM (where your account for registration, training etc. is): www.adum.fr
 - The STIC pages on the Paris-Saclay web site: <https://www.universite-paris-saclay.fr/fr/ecoles-doctorales>
(the ED STIC pages will change in 2020)
- **Communication:**
 - **read carefully the emails** from ADUM and from your pole. They are sent to the email address you wrote in ADUM.
 - To send an email to your pole (director and assistant) : poleXstic@lri.fr, where X=A, B or C.

Last recommendations (1/2)



- **Many things to do:**
 - Experimental work, Software development,
 - Publications, Training, Teaching, Administration
- **Have a roadmap** ... to check and revise at least once a year !
 - Research & Training
- (Learn to) be **autonomous** but **get help** (supervisor) and collaborate (team)
- **Be well-organized**
 - Some periods are more productive than others
 - Do not waste time !
- 2,5% of the PhD students (too many) stop before their defense !
- **In case of (any kind of) difficulties get in touch with the DS as early as possible !**



FOCUS ON YOUR GOALS AND ENJOY YOURSELF !

Doing Research

Developping & Sharing Experiences

Travelling To Conferences

Visiting Research Teams Around The World And in Companies

PhD Award



PhD award, by STIC DS and DigiCosme



- It happens every year.
- It is not a thesis award!
- Can be submitted any research work achieved the year before: publication, experiment, demo, software, competition.
- 2019: 19 works submitted.
- The committee is composed of researchers from the STIC DS



Mérouane DEBBAH

Huawei - CentraleSupélec



- First award ex aequo:
 - **Adrien KOUTSOS**, LSV, ENS Paris-Saclay, for the paper « The 5G-AKA Authentication Protocol Privacy »
 - **Ammar MIAN**, SONDRRA, CentraleSupélec, for the paper « New Robust Statistics for Change Detection in Time Series of Multivariate SAR Images »
- 2nd award ex aequo:
 - **Marie FORTIN**, LSV, ENS Paris-Saclay, for the paper « FO = FO3 for linear orders with monotone binary relations »
 - **Zhenyu LIAO**, L2S, CentraleSupélec, for the paper « A Large Dimensional Analysis of Least Squares Support Vector Machines »