

<https://www.universite-paris-saclay.fr/ecoles-doctorales/electrical-optical-bio-physics-and-engineering-eobe>

Ecole doctorale
Electrical, Optical, Bio: Physics and Engineering
EOBE

**Information and welcome meeting
of new PhD students**

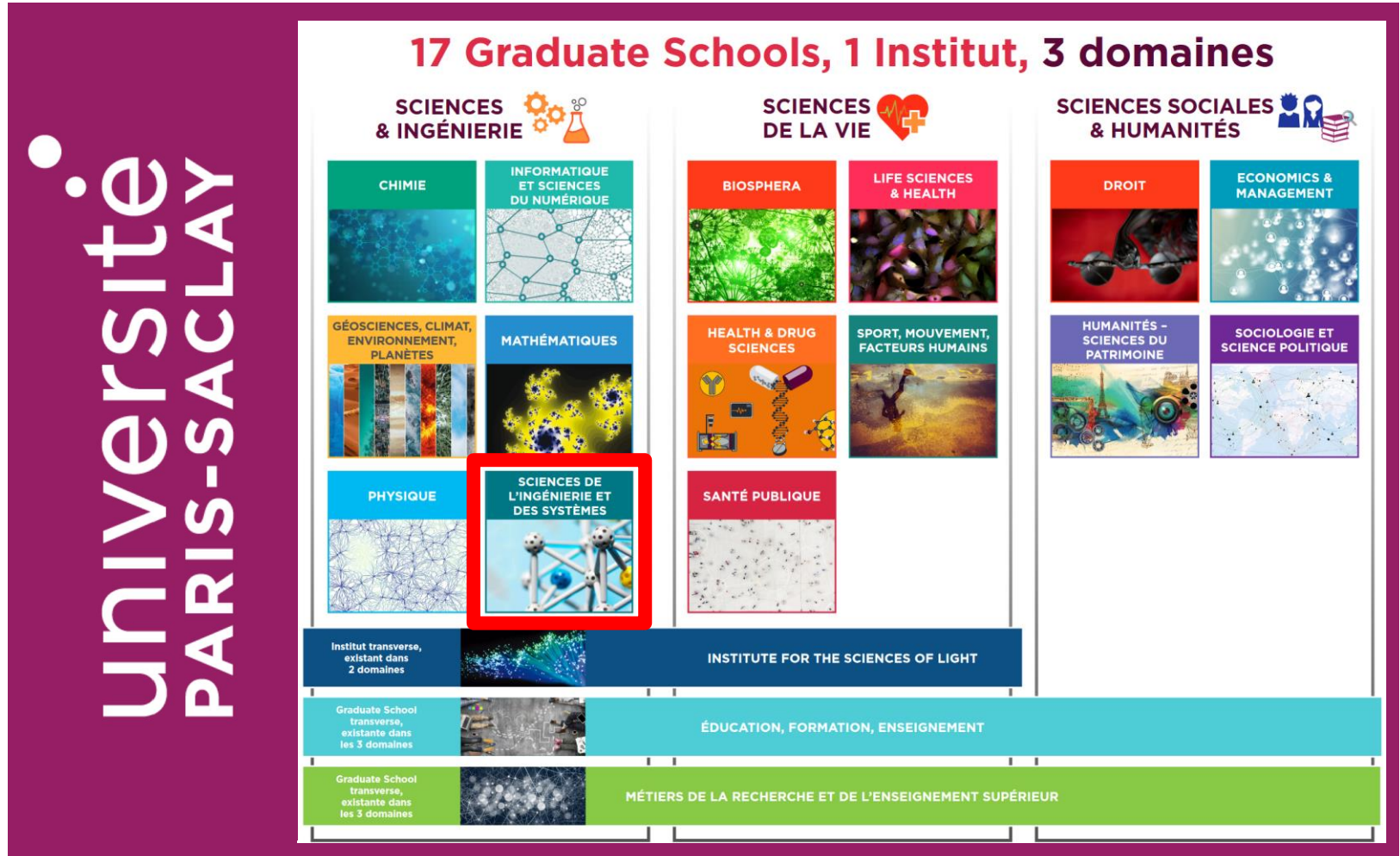
- ❑ Introduction and presentation of the doctoral school
- ❑ The PhD project: several actors
- ❑ Scientific Follow-up committee
- ❑ Main points of the registration steps
- ❑ Doctoral training
- ❑ Information and good practices regarding the PhD project
- ❑ Your ADUM account
- ❑ Harassment
- ❑ Discussion & Questions.

You are PhD students ...where ?

université
PARIS-SACLAY



You are PhD students ...where ?



Neuf Masters

Mécanique

Énergie

Génie Civil

E3A

Sciences et Génie des Matériaux

Génie des Procédés et des bio-procédés

Ingénierie des systèmes complexes

Nuclear Energy

Calcul Haute Performance et Simulation

1200 étudiants en M1

1500 étudiants en M2

Neuf axes forts de Recherche

Material Science & Engineering

Biochemical, Chemical & Biomedical Engineering

Optical Science and Engineering

Telecommunication Engineering

Industrial Engineering

Fluid and Solid Mechanics

Electrical Engineering and Applied Physics

Automation, Control and Robotics

Computational Science and Applied Mathematics

Quatre écoles doctorales

SMEMAG

EOBE

Interface

STIC

67 laboratoires

2800 chercheurs

Quatre ONR opérateur/opérateur-associé

CEA

CNRS

INRAE

INRIA

<https://www.universite-paris-saclay.fr/graduate-schools/graduate-school-sciences-de-ingenierie-et-des-systemes-sis/graduate-school-sis-nos-4-ecoles-doctorales>

Save the date !

Journée d'accueil des doctorants

GRADUATE SCHOOL Sciences de l'Ingénierie et des Systèmes

Mardi 13 janvier 2026
de 8h30 à 12h30

À CentraleSupélec
Bâtiment Bouygues, Théâtre Rousseau (e.070)



Université Paris-Saclay
President : **Camille GALAP**

Doctoral college
Director : **Sandrine ONGERI**

Maison du doctorat (MDD)
Director :

Graduate School SIS
Director : **Laurent Daniel**

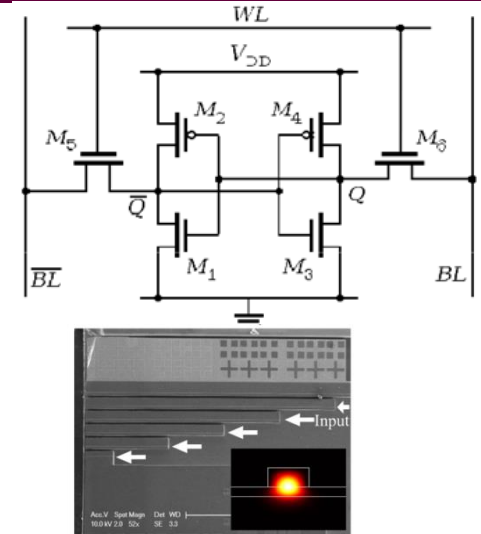
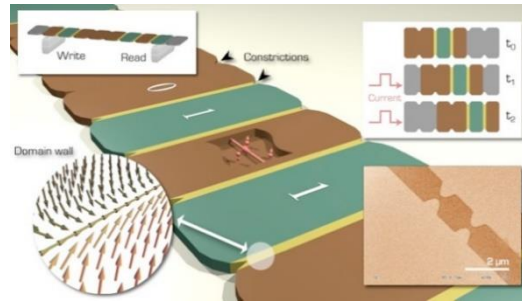
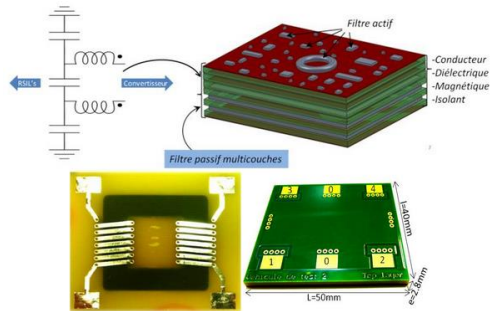
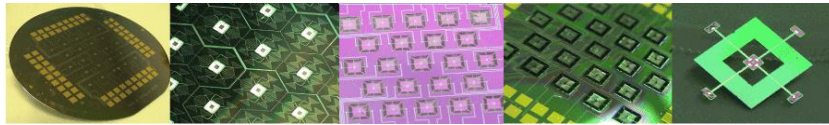
Doctoral school EOBE

Director:
Jean-Christophe GINEFRI

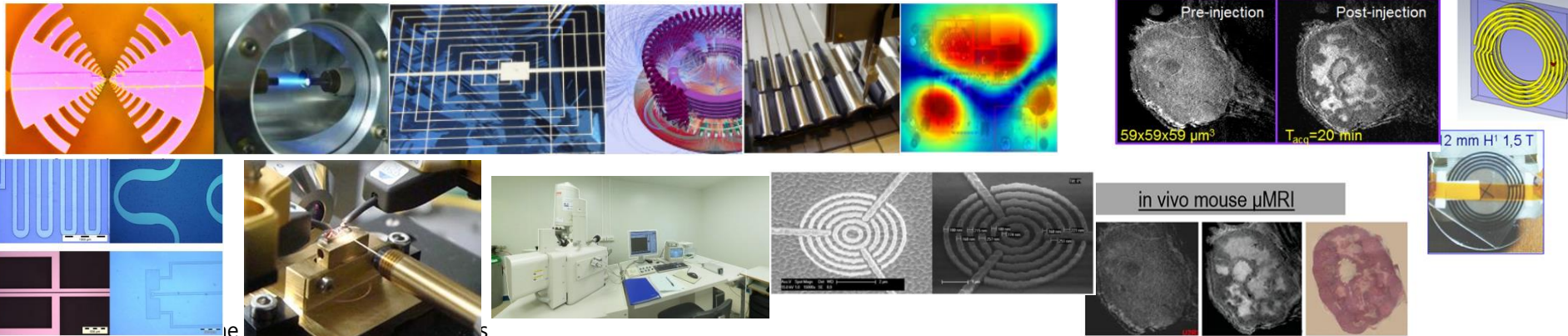
Deputy directors :
Jean-Paul ADAM
Philippe DESSANTE
Elie LEFEUVRE
Frédéric MAZALEYRAT
Riccardo MESSINA

Assistant:
Julie Delegrange
Sandy Louis

Paris-Saclay doctoral chart et Internal rules of the Paris-Saclay doctoral college:
<https://www.universite-paris-saclay.fr/recherche/doctorat-et-hdr/textes-de-reference>



Continuum between physics and engineering in the domains of :
electronics-nanoelectronics, electrical engineering, electromagnetism, sensing (devices, instrumentation, metrology), optics/photonics/optoelectronics, imaging methods and techniques for life sciences.



Jean-Christophe GINEFRI,
Director the doctoral school

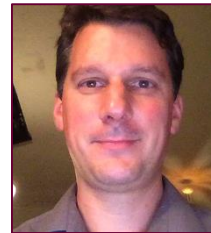


Julie Delegrange, Sandy Louis
Assistant 0169157849

Julie.delegrange@universite-paris-saclay.fr

Sandy.Louis@universite-paris-saclay.fr

**Deputy directors of
the doctoral school:**



Riccardo
MESSINA

Elie
EFEUVRE

Jean-Paul
ADAM

Philippe
DESSANTE

Jean-Christophe
GINEFRI

Frédéric
MAZALEYRAT

1. Electromagnetism and electrical engineering				✓		✓
2. Electronics, spintronics, photonics	✓	✓	✓			
3. Micro-nano-bio-techn., microsystems, sensors, instrumentation, metrology		✓	✓		✓	
4. Optical systems/vision, physics and imaging systems for bio-medical applications	✓				✓	

Amaury AJASSE

Geeps

Génie électrique et électromagnétisme,

amaury.ajasse@ens-paris-saclay.fr



Zarina NAZYROVA

C2N

Micro-nano-bio-technologies, microsystèmes,
capteurs, instrumentation,

nzzarina@gmail.com.



Jeanne LE SOUDEER

Satie (ENS)

Génie électrique et électromagnétisme,

jeanne.le_soudeer@ens-paris-saclay.fr



Joseph BREGEAT –

Baobab (CEA)

Systèmes d'imagerie, imagerie pour le

biomédical, joseph.bregeat@cea.fr

WE ARE HERE TO HELP

If you encounter difficulties during your Ph.D don't stay alone, we can provide assistance.

universite
PARIS-SACLAY



FOR Ph.D RELATED ISSUES & CONFLICTS
Ph.D representatives
amaury.ajasse@ens-paris-saclay.fr, joseph.bregeat@cea.fr,
nzzarina@gmail.com, jeanne.le_soudeer@ens-paris-saclay.fr

Your CSI Members, Your laboratory director
Doctoral school director
jean-christophe.ginefri@universite-paris-saclay.fr
Psychosocial Risk Prevention for Ph.D. students
laetitia.pereira@universite-paris-saclay.fr



**DISCRIMINATION/HARASSMENT/SEXIST
AND SEXUAL VIOLENCES**

Your CSI Members
Doctoral school director
jean-christophe.ginefri@universite-paris-saclay.fr
DALIDA (Univ. anonymous online incident report)
<https://www.universite-paris-saclay.fr/en/dalida-incident-report-unit>
Psychosocial Risk Prevention for Ph.D. students
laetitia.pereira@universite-paris-saclay.fr



FOR HEALTH ISSUES
Student health services
sse.contact@universite-paris-saclay.fr
service.medical452@universite-paris-saclay.fr
<https://www.universite-paris-saclay.fr/le-service-de-sante-des-doctorantes>
MonSoutienPsy (12 FREE appointments)



EMERGENCIES (7j/7 - 24h/24)
SAMU : 15, **Firefighters** : 18
Suicide prevention : 3114
Nightline Saclay : 01 85 40 20 10 (French)
01 85 40 20 00 (English)
Psychiatric Support Center (CPOA) : 01 45 65 81 09



ADMINISTRATIVE ISSUES
Doctoral school assistant
julie.delegrange@universite-paris-saclay.fr
Human resources
doctorant.drh@universite-paris-saclay.fr
International Matters
contact@science-accueil.org
international.welcomedesk@universite-paris-saclay.fr

ENJOY your Ph.D. experience.
It's a healthy environment when :

- You are treated with **kindness**
- Your **ideas and decisions are respected**
- You receive **constructive feedback** on your work that helps you improve it
- You are **given opportunities** to develop your skills and self-confidence
- Your **career development** is supported
- You are allowed a **good work-life balance**



TALK ABOUT IT. It's violence when:

- You are assigned to "gender-based" tasks
- Your skills are underestimated
- You are treated condescendingly
- Your ideas are made invisible
- Your skills are publicly belittled
- You are judged based on your appearance
- You occasionally receive openly sexist comments or inappropriate terms
- You are isolated from your colleagues
- You are asked questions on your intimate life
- Sexual rumors are spread about you



ASK FOR HELP. You are in danger when:

- Sexist jokes are told all day long
- You are told sexual stories that make you uncomfortable
- You receive insulting or hurtful public comments with sexual connotations
- You are exposed to sexually explicit material
- You are threatened with retaliation if you report violent behavior
- You receive unwanted intimate advances
- You are offered career advantages in exchange for intimate relations
- You suffer negative consequences for refusing sexual advances




CAMPUS LIFE
@ www.universite-paris-saclay.fr/en
(health, handicap, international, social help, housing, sports, activities, etc.)



SUAPS ?

- **What is it ?**
 - For students or staff member, « Service Universitaire des Activités Physiques et Sportives » = University Department of Physical and Sports Activities
- **Which activities?**
 - **Team sports :** Basket-Ball; Football; Futsal; Hand-Ball; Rugby; Volley-Ball...
 - **Combat sports:** Art chinois ; Boxe Anglaise ; Boxe française; Judo; Karaté; Capoeira...
 - **Workout:** Fitness ; Musculation ; Yoga ; Step ; Pilâtes ; Renforcement Musculaire...
 - **Danse :** Modern Jazz; Rock'n'roll; Salsa; Zumba; West Coast; Bachata...
 - **Rackets:** Badminton; Tennis; Squash; Tennis de Table...
 - **Swimming:** Natation, BNSSA...
 - **Some more:** Athlétisme ; climbing; VTT trails...
- Throughout the year, SUAPS organizes events: Ski Camps, Wellness Week, Tri-Relays...
- **More info :**
<https://www.universite-paris-saclay.fr/vie-de-campus/le-sport-sur-les-campus-de-paris-saclay> site de l'université onglet vie de campus onglet sport
- **To subscribe :**
<https://sport-upsaclay.fr/index.php> portail sport du SUAPS pour inscription
 - A school certificat is necessary
 - Can be done all year long, depending on availability
 - Doctoral students who paid the « CVEC » are considered students in the portal
- **The SUAPS is looking for volunteers to build university-wide projects, contact me if interested (jeanne.le_soudeer@ens-paris-saclay.fr)**

EOBE PhD day

- 1st edition coming soon (spring 2026)...



Preliminary information:

- ❑ 5 PhD students are elected each 2 years for 2 years
 - **Representatives of the the doctoral school PhD students**
 - Interact with the other students, collect question/complains/ideas, inform...
 - Participate to the ED council.
 - Participate to mediation meetings
 - Organize doctoral school events

Counts as a complementary activity : skills and points are associated to it.

- ❑ Elections between January 15 and February 15
- ❑ On-line vote organized by the doctoral school
- ❑ You can apply several times
- ❑ We encourage to ensure that representatives from the main different locations and thematics are present.

If you want to apply : Contact Jean-Christophe Ginefri

- ❑ Introduction and presentation of the doctoral school
- ❑ **The PhD project: several actors**
- ❑ Scientific Follow-up committee
- ❑ Main points of the registration steps
- ❑ Doctoral training
- ❑ Information and good practices regarding the PhD project
- ❑ Your ADUM account
- ❑ Harassment
- ❑ Discussion & Questions.

Role of the PhD supervisor:

- Ensures remuneration of his PhD students during the whole duration of the PhD
- Elaborates the PhD project (in cooperation with the PhD student)
- Ensures a **frequent and regular follow-up** of the thesis advancement
- Provides the needed resources for the accomplishment of the PhD project
- Encourages the PhD student to attend useful modules for his PhD project
- Commits to help the PhD student preparing the rest of his career
- Incites and helps the PhD student to publish his work
- Advices the PhD student for the writing of the manuscript and the preparation of the defense
- Proposes the two reviewers for the manuscript and the jury members for the defense
- Validates demands in ADUM (application, registration, jury, defense)

Role of the PhD student:

- **Leads** the doctoral project
- Regularly **informs** the supervisor of the work progress
- Knows safety regulations, attendance, professional and intellectual property rules of the institution....
- Participates to tasks of general interest.
- Attends mandatory trainings (ethics, open science, sustainable research, welcome day, « after the PhD » day))
- Votes for the representatives in the institution
- Handles registration and defense procedures (including CSI meeting)
- Publishes results with the explicit agreement of the supervisor
- Writes a manuscript and defends
- Informs about his/her position during 5 years after the defense

INFORM YOURSELF (procedures, trainings, offers, ...)

Role of the Doctoral School:

EOBE Assistant :

- assists the EOBE management board
- ensures EOBE administration
- organizes appointments at the doctoral school
- analyzes and validates the completeness of registration and defense procedure
- help you with ADUM
- answers your questions
- advises you and directs you to the right contacts

Deputy director (your EOBE referent) :

- analyzes and validates the scientific admissibility of procedures
- read the CSI reports
- discusses thesis progress with you at the annual registration meeting
- oversees doctoral training and the creation of a skills portfolio
- answers your questions
- advises you and directs you to the right contacts

- ❑ Introduction and presentation of the doctoral school
- ❑ The PhD project: several actors
- ❑ **Scientific Follow-up committee**
- ❑ Main points of the registration steps
- ❑ Doctoral training
- ❑ Information and good practices regarding the PhD project
- ❑ Your ADUM account
- ❑ Harassment
- ❑ Discussion & Questions.

Role of the follow-up committee

- ✓ **Monitor** the scientific advances of the PhD work
- ✓ **Detect and alert** on problems of moral/sexual harassment and discrimination

Time line of the follow-up committee

- ✓ The PhD student organizes the meeting with its committee **EVERY YEAR**, well before each registration

The follow-up committee gives its opinion about the registration

The CSI report must be uploaded in ADUM for all registrations (including 4th year and above).

Composition of the follow-up committee

- ✓ Ensures the independence of the committee and promotes the voice of the PhD student
- ✓ The follow-up committee includes :
 - At least **one specialist** in the discipline of the thesis, **HDR**
 - At least **one external** to the institution and the doctoral project.
 - **A non-specialist** external to the research field of the doctoral project, **internal to the University of Paris-Saclay** and acting as the **president of the committee**.
- ✓ The composition of the committee should **remain constant**
- ✓ The committee **members do not participate in the supervision** of the PhD
- ✓ The committee **members cannot be the thesis' reviewers**.
- ✓ The composition of the committee is established by the PhD supervisor
- ✓ **The CSI members are kind and helpful, and are there to assist and advise you.**

Meeting with the follow-up committee

- ✓ **Before the meeting (early enough !!):** the PhD student organize the meeting (doodle..)
- ✓ **Before the meeting (at least 2 weeks) :** the PhD student send a 10-15 pages reports
- ✓ **During the meeting :** Organization in 4 steps
 - 1- the PhD student present it's work
 - Context, aims, methods/tools, results, perspectives, 20/25 minutes
 - The committee asks you question / discusses with you on the scientific work
 - 2- the PhD student discuss **ALONE** with the committee
 - Give your feeling, concerns, problems **NOT ONLY SCIENTIFIC**
 - 3- Your supervision team discuss alone with the committee
 - Give their opinion about you, useful information
 - 4- The committee presents, in front of everyone, a brief conclusion
 - General opinion, advices, warning
- ✓ **After the meeting :**
 - The committee writes and signs a report, and send it to you
 - the PhD student upload it in **ADUM** before the appointment for registration

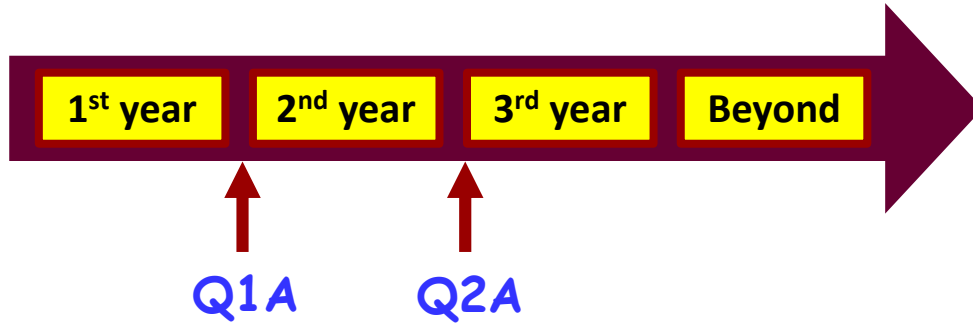
- ❑ Introduction and presentation of the doctoral school
- ❑ The PhD project: several actors
- ❑ Scientific Follow-up committee
- ❑ **Main points of the registration steps**
- ❑ Doctoral training
- ❑ Information and good practices regarding the PhD project
- ❑ Your ADUM account
- ❑ Harassment
- ❑ Discussion & Questions.

**READ
THE
CHECKLIST**



+ specific appointments whenever required

- ✓ **Before** the appointment at the doctoral school with your referent:
 - You upload all the documents and finalize your demand (registration or defense)
 - The PhD supervisor validates the demand
 - The laboratory director validates the demand
 - The EOBE assistant validates the demand
- ✓ **During** the appointment at the doctoral school with your referent:
 - Your referent validates "hors catalogue" doctoral trainings
 - Your referent validates the demand (registration or defense)
- ✓ **After** the appointment at the doctoral school with your referent:
 - You pay the tuitions fees (for registration only)
 - The scolarity service validates the demand
 - The scolarity service submits it for signature by the vice-president
 - The vice-president signs the demand
 - You download available documents (registration certificate, defense documents...)



3 questionnaires, filled by :

- The PhD candidate
- The industry supervisor (CIFRE)
- The PhD supervisor

We encourage you to read them early.

Focus on the questionnaire
filled by the PhD supervisor:

- Technical skills for the PhD topic: A/B/C
- Scientific skills for the PhD topic: A/B/C
- Autonomy (can find information and solutions alone): A/B/C
- Ability to manage the research topic bibliography (find and draw an efficient synthesis): A/B/C
- Ability to find new solutions to problems: A/B/C
- Self-adaptation capacity (and ability to learn new tools and methods): A/B/C
- Ability to explain one's results: A/B/C
- Ability to organize one's scientific strategy: A/B/C
- Presence and punctuality: A/B/C
- Quality of the solicitations to group members (ask when needed): A/B/C
- Integration within the research team: A/B/C
- Quality of the professional relationship with the staff: A/B/C

A: Good
B: Average
C: Not enough

Conclusion: one reply between the four:

- I am trully satisfied of the PhD candidate.
- After initial difficulties, the PhD candidate has entered a positive slope regime for the project.
- I am doubtful that the PhD candidate can achieve his/her project.
- The PhD candidate cannot achieve his/her project.

CONFIDENTIAL

This form will not be transmitted to your supervision to be sent by the PhD student to questionnaires.edeobe@universite-paris-saclay.fr before registration in the 2nd year

In case of difficulty to save the filled document, choose in the menu > file > print > print in a file > PDF

Doctoral student's assessment of his 1st year of thesis

PhD student : Last name, First name

PhD supervisot : Last name, First name

Number of months since the beginning of the thesis: cosupervision cotutelle

Rating : A = yes B = mixed opinion C = no

- Do you feel supported by your thesis director? A B C
- Are your supervisors available to answer your questions? A B C
- Do you have enough autonomy to manage your work? A B C
- Do you have the necessary means to carry out your work? A B C
- Can I find answers to my scientific questions in my work environment? A B C
- Does the scientific interest of the subject correspond to your expectations? A B C
- Is the quality of human relations with other PhD students good? A B C
- Are your human relations with the other members of the laboratory good? A B C

- I am globally satisfied with the way the thesis is going** A C
- I feel less well treated than other PhD students** A C
- I feel abnormal pressure from my supervisor** A C
- I would like to have a personal interview with the head of EOBE** A C

Follow-up committee

I have questions concerning the progress of my thesis and the scientific orientations and I would like to convene my monitoring committee in advance

OUI

NON

Amount of **scientific doctoral training** ([format Ed EOBE](#)) followed since the beginning of the thesis:

Amount of **professional doctoral training** ([format Ed EOBE](#)) followed since the beginning of the thesis:

Thesis follow-up means in the past year (laboratory mid-thesis defense, laboratory doctoral student day, presentations within the research team, etc). Dates, places, duration, to be specified:

Possible additional comments:

If you cannot fill in some fields (Pdf-X-change, Acrobat Reader, Sumatra pdf, for example, normally allow it), simply send your additional texts to [questionnaires.edeobe@universite-paris-saclay.f](mailto:questionnaires.edeobe@universite-paris-saclay.fr)



VERY IMPORTANT :

- ✓ The registration platform is closed from 31st October each year.

✓ Validé	▶ En cours	❌ À faire
✓ Etat civil	Les inscriptions sont fermées, veuillez contacter l'établissement concerné.	
✓ Coordonnées		
✓ Rattachement administratif		
✓ CVEC		

**You will receive several mails informing you about
the date of the registration appointment**



**Do not wait, prepare your registration asap
(CSI, titre de séjour, contract...) .**

VERY IMPORTANT: During the 3rd (last) year of the PhD

- ✓ You will receive an email (in march) about the registration in 4th year (and above).
The 4th Y(+) registration will take place in september

➔ **No latter than beginning of September, YOU MUST DECIDE :**
Will the defense take place before the 31st of december ?

YES

- ✓ Thesis manuscript is almost finalized
- ✓ The doctoral training is completed
- ✓ The jury is set
- ✓ The defense date/period is fixed

Start the defense procedure in ADUM

NO WAY BACK

NO

- ✓ Register in 4th Y(+)
- ✓ Have a funding prolongation
- ✓ Meet the CSI
- ✓ Get the documents (derogation form...)

Start the registration procedure in ADUM

- ❑ Introduction and presentation of the doctoral school
- ❑ The PhD project: several actors
- ❑ Scientific Follow-up committee
- ❑ Main points of the registration steps
- ❑ **Doctoral training**
- ❑ Information and good practices regarding the PhD project
- ❑ Your ADUM account
- ❑ Harassment
- ❑ Discussion & Questions.

Goal: acquire skills during the PhD

✓ **Develop your skills** during your PhD by :

- The phd work it-self
- Complementary trainings/activities

**Ask yourself :
What do I need ?**

✓ Count the acquired **skills with points** (not hours)

→ Get **180 points over 3 years**

- **160 points** for the PhD work (automatically acquired by obtaining the PhD degree, **you have nothing to do regarding this.**)
- **20 points** (or more) for complementary trainings/activities (identify your needs, find the training, register and attend the training)

Skills associated to complementary trainings/activities: **20 points**

✓ **Trainings :**

- **Scientific:** improve your knowledge in a scientific domain.

M2 courses, summer school, proposed by a doctoral school...

- **Professional:** improve professional/transverse skills, prepare your career

Specific training, ADUM catalog

- **4 Mandatory trainings :**

Ethic and scientific integrity,

Open Science

Sustainable research

Sexual violence and Harrassment

Mandatory training's are
proposed by Paris-Saclay

*Other trainings addressing
these aspects are accepted*

✓ **Activities :**

- **Any activities done in the frame of your PhD**

Teaching, event organization, representative, student supervision

More information :

 <https://www.universite-paris-saclay.fr/en/recherche/doctorat-et-hdr/complementary-doctoral-activities-and-training>

Type d'activité	Nombre de points correspondants
Formation du catalogue ADUM	5h présentielle correspondent à 1point
Cycle de séminaires	5h présentielle correspondent à 1point
Cours (M2, école d'été...)	5h présentielle correspondent à 1point
Engagement associatif étudiant	1 à 3 points
Engagement dans la démocratie académique	Points en fonctions du temps de travail personnel
Engagement dans les comités d'évaluation et jurys	Points en fonctions du temps de travail personnel
Doctorant.e chargé.e de mission d'enseignement	7 points pour la formation à l'enseignement
Enseignement devant étudiants	Entre 10 et 25 HETD maximum : 5 points
Co-Encadrement d'étudiant.e.s en laboratoire	Maximum 3 points
Membre d'un comité d'organisation	Points en fonctions du temps de travail personnel
Participation à un programme de mentorat	1 à 3 points
Formation à la médiation scientifique	7 points
Activité de médiation diverses	5 points pour 20 jours maximum
Formations dédiées l'expertise ou la valorisation	7 points
Activités d'expertise ou de valorisation diverses	5 points pour 20 jours maximum
Autre activité formatrice hors catalogue	Points attribués en fonction de la durée

Two categories of trainings

- **Inside the ADUM catalog** : *Managed by Paris-Saclay doctoral training service*
 - You consult the catalogue
 - You choose a training
 - You register online in ADUM
 - You attend** and finalise the training module
 - The doctoral training service validates** your participation.
- **Outside the ADUM catalog** :
 - You find out a training (M2, summerschool, CEA, CNRS, ...)
 - You contact the person in charge of the training to register
 - You attend the training and finalise the training module
 - You get a certificate of attendance (you don't have to take the exams)
 - You declare the training in ADUM and upload the certificate .

Complementary activities = trainings outside the ADUM catalog

The ADUM catalog :

- Contains many scientific and professional trainings
(and mandatory trainings)
- Proposes coherent trainings packs (6 career paths) :
 - Instructor in higher education or lecturer-researcher
 - Research, within the private sector R&D
 - Consulting, studies and expertise, prospective and strategy
 - Entrepreneurship and innovation
 - Scientific mediator, scientific communications and journalism
 - Valuation of innovative research projects: from concept to market

Example of career paths

' Innovation consultancy and expertise ' Training path		
	City	Person in charge
- Tous Experts! Label	Présentiel- l'ENS Paris-Saclay (Gif-sur-yvette)	aurelie dudezert
' Higher education ' Training path		
	City	Person in charge
- Atelier 'Définir et clarifier ses méthodes d'enseignement'	ORSAY 91400	Sandrine DON
- Atelier 'Soutenir la motivation des étudiants'	ORSAY 91400	Sandrine DON
' Scientific mediation, communication and journalism ' Training path		
	City	Person in charge
- Construire et animer une action de médiation scientifique pour les jeunes, autour du débat science-société	ORSAY	doctorat formations
- Formation de base : Concevoir un projet de vulgarisation innovant en 2 jours !	Gif-sur-yvette	doctorat formations

Manage complementary trainings and activities in your ADUM space

The screenshot shows the ADUM account interface with three main sections: **Trainings**, **My documents**, and **Administrative documents**. The **Trainings** section is highlighted with a red box and an arrow pointing to a yellow callout box that says "doctoral trainings can be managed herels". The **Declaration of external training courses** option in the **Trainings** list is also highlighted with a red box and an arrow pointing to a yellow callout box that says "Declare trainings outside the catalog here".

- Trainings**
 - ▶ Training courses list
 - ▶ Training courses list RNCP Skills ⓘ
 - ▶ Statement of the undergone training modules
 - ▶ Training module
 - ▶ Declaration of external training courses
- My documents**
 - ▶ Upload my CV
 - ▶ My photo - Update my photo
 - ▶ 📄 Registration documents
- Administrative documents**
 - Inscription - Réinscription**
 - ▶ Documents de références et procédures

Manage complementary trainings and activities in your ADUM space

[Private space](#) [My profile](#)

Training courses list

Training courses list RNCP skills block

Ongoing training courses

Add an external training module

My situation

Procedure for skills self-assessment

External Training courses

*To register your request, you will need to submit your proof of participation.
You must enter the number of hours worked or the number of credits or both if applicable.*

Title of the training *

Category *

Academic year *

start date * end date: *

University and City *

Number of hours done * Set only whole numbers


Number of credits/points *

Skills acquired at the end of the training course

*

Content/Program of the training

*



RNCP - Skills and abilities targeted by the diploma

This training allows, within the framework of research and development, studies and prospective, to develop the following skills and capacities :

Decree of 22nd February 2019 defining the skills of doctorate holders and registering doctorates within the national directory of professional certification

Complete the training's information

Manage complementary trainings and activities in your ADUM space

RNCP - Skills and abilities targeted by the diploma

This training aims at the development of research and development, studies and prospective, to develop the following skills and capacities :

Decree of 22nd February 2019 defining the skills of doctorate holders and registering doctorates within the national directory of professional certifications

Block 1: Conceiving and elaborating a research and development procedure

- Having scientific expertise, both general and specific, within a precise field of work and research
- Assessing the status and limits of knowledge within a specific field of activity, on a local, national and international scale
- Identifying and resolving complex and new problems involving several fields, by engaging the most advanced knowledge and skills
- Identifying possibilities of conceptual breaks and conceiving innovation points within a professional sector
- Offering innovating contributions within high-level exchanges and in international contexts
- Constantly adapting to research and innovation constraints within a professional sector

Block 2: Setting up a research and development, study and prospects, procedure

- Using research methods and tools in relation with innovations
- Using the principles, tools and procedures for evaluating the costs and funding of an innovation or R&D
- Guaranteeing the validity of works, and their deontology, by using adapted control methods
- Manage the temporal constraints of research, innovation, or R&D activities
- Using engagement, risk management, and autonomy factors necessary to finalizing an innovation, research or R&D project

Block 3: Promoting and transferring the results of a R&D, study and prospects, procedure

- Engaging in transfer issues with the goal of exploiting or promoting results or products within economic or social sectors
- Respecting the rules of intellectual or industrial property
- Respecting the principles of deontology and ethics in relation to the integrity of research and potential impacts
- Using all the dispositions for publication on the international level allowing to promote new knowledge and skills
- Engaging in "open data" communication techniques to promote procedures and results

Block 4: Scientific and technological vigil on an international scale

- Obtaining, synthesizing and analysing data, avant-garde scientific and technological information on an international scale
- Possessing understanding, necessary distance and a critical outlook on all the available high-end information
- Overcoming the barriers of available data and knowledge by using different fields of knowledge and professional sectors
- Developing webs of scientific and professional cooperation on an international level
- Possessing the necessary curiosity, adaptability and opening for acquiring and maintaining a high level of general knowledge

Block 5: Training and sharing scientific culture

- Giving accounts and communicating in several languages on the subject of research of a scientific or technological, aimed at various publics or publications, both written and spoken
- Teaching and training different audiences to advanced concepts, tools and methods
- Adapting to a varied public in order to communicate and promote high-end concepts and procedures

Block 6: Monitoring teams dedicated to R&D, studies and prospects activities

- Leading and coordinating a team in the case of complex and inter-disciplinary tasks
- Identifying the missing skills within a team and taking part in recruitment or finding service providers
- Setting up the necessary procedures to initiate a spirit of entrepreneurship within the team
- Identifying key resources for a team and preparing evolutions in terms of training and personal development
- Evaluating the work of others and of the team regarding projects and goals

Social skills

- Adaptability; Perseverance; Resilience; Managing change and failure; Commitment
- Creativity, ability to imagine and formulate original ideas; Flexibility of mind and openness to new things
- Knowledge and self and behaviour Control = Ability to self-evaluate and challenge oneself; Knowledge of one's own limits; Balance Rigour/Flexibility
- Independence; Autonomy; Initiative and decision making
- Inter-relational skills = Communication skills; Listening and empathy skills, goodwill; Relationship to the other; Teamwork skills and sense of collective responsibility.

Choose the corresponding skills

Select the training's objective

The training contributes to the following objective: (Please select a value)

Manage complementary trainings and activities in your ADUM space

Upload the certificate of attendace

Attendance certificate and detailed training program*

Upload the detailed training program and the certificate of your participation in the training course (PDF).

This document will be deleted once the course has been validated.

(Drag and drop a document into this zone, or click on the bottom right button)

Parcourir...

> BACK TO THE LIST

> SAVE AND SEND MY REQUEST

Save the training declaration

Private space

My profile

My career

Questions

Validated Ongoing To be done

Manage your skills in your ADUM space

Civil status

Contact information

Administrative attachment

Status and Funding

Thesis progress

Foreign languages

Display management

Individual training contract

Thesis follow-up members

Documents to be attached

Professional career

Publications

Competencies and portfolio

Your profile will be accessible to recruiters and the research community, so consider updating your profile regularly to keep it up-to-date.

Did you teach? (university, number of hours)

Are you looking for a job ? no yes

Professional project *

- Teacher/researcher, higher education teaching personnel
- Researcher within an academic field
- Researcher within a company, R&D in the private sector
- Steering research and innovation, managing innovative projects, steering innovative structures
- Work relating to research assistance and support, innovation and promotion, developing innovative Spin-Offs and Start-Ups
- Expertise, studies and counselling within organisations, cabinets or companies providing intellectual services, scientific, prospective or strategic expertise
- Entrepreneur within innovative fields
- Scientific mediation, scientific communication and journalism, scientific edition, international relations
- Other

Technical skills

Transverse skills

Competencies and portfolio

- ❑ Introduction and presentation of the doctoral school
- ❑ The PhD project: several actors
- ❑ Scientific Follow-up committee
- ❑ Main points of the registration steps
- ❑ Doctoral training
- ❑ Information and good practices regarding the PhD project
- ❑ Your ADUM account
- ❑ Harassment
- ❑ Discussion & Questions.

✓ **All along the PhD :**

Enthusiasm, dynamism, methodology, collaborative work.

➔ **Lead your doctoral project**

✓ **PhD duration :**

The by-default duration is 3 years, it's short

- More than 3 years is possible if **further funding is present to support the extended period.**
- Everything must be anticipated.

The PhD supervisor and yourself have
to anticipate this deadline (at least 6 months before).

Publications

- **Valuation of works:**
Seminars, congresses, publications
- **How many?:**
By default, **one journal paper and one intern. conf. com.**
are required by the EOBE doctoral school
- **Advice :**
Participation to at least **one international conference**
- **Remark:**
The communication of any result needs the explicit
agreement of the PhD supervisor

The defense (1/2)

READ
THE
CHECKLIST

✓ Conditions to be met:

- Writing the PhD thesis
 - Full report different from the papers
 - Not gathering the papers
 - In French by default or in English + 5-10p French summary



Sometimes a very difficult step ! :

- *Test before your ability to organize ideas and write.*
- *Allocate enough time for writing/correcting the manuscript*
- Agreement of the supervisor
- Sufficient scientific production
- Validation of all mandatory trainings

The defense (2/2)

✓ Important steps and **DEAD LINES**

- Contact your EOBE referent to propose him the jury members
3 months before the defense
- Designation of the jury in ADUM, including two external reviewers
2 months before the defense
- Legal deposit of the thesis: ADUM + contact with the library
2 months before the defense
- Authorization to defend according to the reviewers' reports
1 month before the defense
- Public announcement of the defense
14 days before the defense

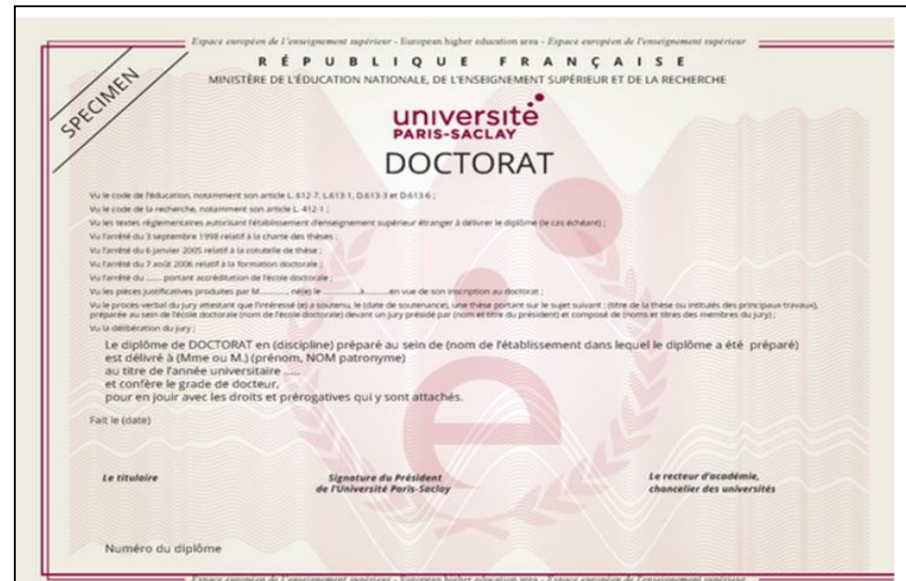
Doctorate awards ceremony!

In July, at CentraleSupelec



Get the PhD degree:

- During the ceremony
- Before/after at the MDD



- ❑ Introduction and presentation of the doctoral school
- ❑ The PhD project: several actors
- ❑ Scientific Follow-up committee
- ❑ Main points of the registration steps
- ❑ Doctoral training
- ❑ Information and good practices regarding the PhD project
- ❑ **Your ADUM account**
- ❑ Harassment
- ❑ Discussion & Questions.

Procedures are paperless, everything is managed in ADUM

Fill in informations :

*Publication list
Out-of catalog trainings,
Any changes (funding, locations...)
Teaching or othe activities,
Acquired skills.....*

Upload important documents

*Activity report,
Documents for registration,
Jury members,
Certificate of attendance*

Download important documents

*Status of complementary trainings
Scholarity certificates
Documents for the PhD defense
Forms for jury member in videoconf...*

Take administrative steps

*Registration procedures
Defense procedures
Pay the tuition fees*

Be familiar with it !

- ❑ Introduction and presentation of the doctoral school
- ❑ The PhD project: several actors
- ❑ Scientific Follow-up committee
- ❑ Main points of the registration steps
- ❑ Doctoral training
- ❑ Information and good practices regarding the PhD project
- ❑ Your ADUM account
- ❑ Harassment
- ❑ Discussion & Questions.

Do not accept : harassment, violence, discrimination

Listen to the victims

Advise victims

Denounce the harassers

If you are a witness or a victim, **ALERT** :

Your supervisor, the head of the lab, the doctoral school, a PhD student representative, the dedicated unit of Paris Saclay....

Dedicated unit: harcelements@universite-paris-saclay.fr

More information: <https://www.universite-paris-saclay.fr/vie-de-campus/lutte-contre-les-discriminations-et-les-harcelements>

- ✓ The **doctoral school website** contains most of the practical information:
 - Everything is given in French and English
 - FAQs for registration and for Defense

<https://www.universite-paris-saclay.fr/ecoles-doctorales/electrical-optical-bio-physics-and-engineering-eobe>

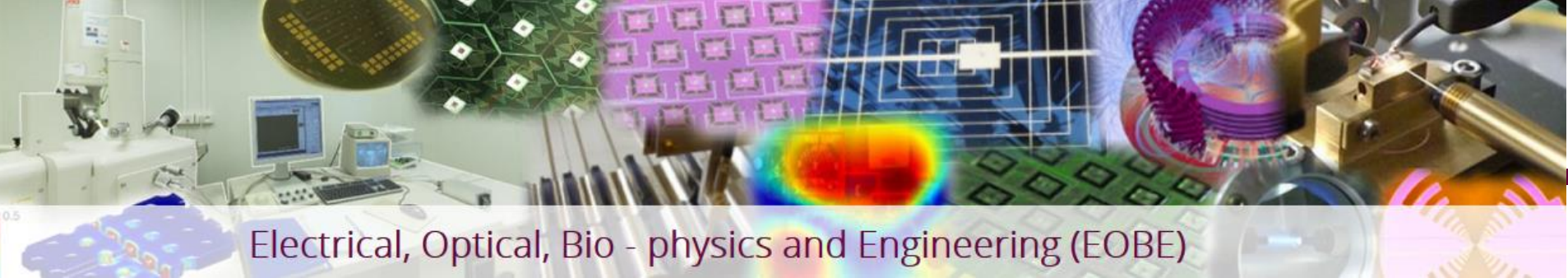
You will find information on:

- The doctoral training
- The (re-)registration procedures
- The defense procedure

- ✓ The **Paris-Saclay University website** contains all information on doctorate (procédures, documents):

<https://www.universite-paris-saclay.fr/recherche/doctorat-et-habilitation-diriger-des-recherches-hdr>

May you have any more question, you can send an email to Mrs **Delegrange** or to your direction board member.



Electrical, Optical, Bio - physics and Engineering (EOBE)

Thank you for your attention

...

Discussion & Questions

**Don't leave yet
There are gifts for you**