

Doctoral student mobility

université
PARIS-SACLAY



université
PARIS-SACLAY

Meet Djamila

Her experience as a doctoral student in chemistry at Freie Universität Berlin

"Starting with the application for Erasmus+ mobility for doctoral students: **the application was fully online in a very simple way and the processing time was satisfactory** (for me it was less than a month)."

My mobility allowed me to obtain new skills in the field of inorganic chemistry, which is complementary to my speciality, organic chemistry, and also allowed me to practice my English, which is fundamental in the research sector.

Mobility in a doctoral programme allows for collaboration with foreign institutions, which adds value to the thesis project and enhances the value of the work. It also allows the acquisition of new skills not only in the field of study but also in the ability to integrate into other organisations in the future, and to have solid language skills.

HOW TO GO

DURATION

FROM 2 TO 12 MONTHS MAXIMUM. (3 MONTHS IS THE IDEAL LENGTH OF TIME TO OBTAIN **THE EUROPEAN LABEL**).

STEPS TO FOLLOW

Where to go?

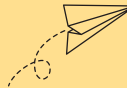
You can go to a Paris-Saclay partner university in the framework of the Erasmus+ program.

Find the Erasmus+ partners on the Paris-Saclay partner map (choose "Erasmus+" as a framework).

You also have the opportunity to go on a mobility within the EUGLOH Alliance at one of the privileged partners.

1

Contact your PhD director to discuss your project, to confirm that the host institution is one of the Erasmus+ partners of the University Paris-Saclay and to get your project approved.



2

Contact the host institution and get an acceptance letter mentioning the host organisation, the length of the mobility and the supervisor on site.



3

Complete the doctoral student pedagogical contract to submit the online declaration. It must be signed at least by you and your supervisor (it will need to be signed by all parties before your departure).



4

Fill out the form "DOCTORAL STUDENT - declare your Erasmus+ mobility" - [click here](#)



5

A jury will review your application to approve your application for an Erasmus+ grant. For more information [click here](#).



Erasmus+ Grant



1) Upon your arrival : 70% of the total amount will be paid at the beginning of your mobility (subject to a complete application)



2) Upon your return : 30% of the total amount will be paid on your return from mobility
Students with disabilities : an additional Erasmus+ package may be awarded to students with disabilities.

For more information [click here](#).

Once your Erasmus+ application has been approved by the commission, the International and European Affairs Office of Paris-Saclay will notify you of the grant decision by e-mail.



Countries in group 3

210€/month

Slovenia, Estonia, Latvia, Croatia, Slovakia, Czech Republic, Lithuania, Turkey, Hungary, Poland, Romania, Bulgaria, Macedonia.

Countries in group 2

270€/month

Netherlands, Austria, Belgium, Germany, Italy, Spain, Cyprus, Greece, Malta, Portugal

Countries in group 1

330€/month

Norway, Denmark, Luxembourg, Iceland, Sweden, Ireland, Finland, Liechtenstein.

EUROPEAN LABEL

The "European Doctorate" or "Doctor Europaeus" is a label awarded by the University of Paris-Saclay, which applies to the national doctoral diploma, already recognised internationally within the framework of the L.M.D system, and which allows the recognition of the European dimension of the doctoral project.



Terms and conditions :

1. The doctorate must in part have been prepared during a research stay of at least three months in another European country.

2. Authorisation to defend is granted on the basis of reports written by at least three teachers, two of whom must be from higher education institutions in two European countries other than the country in which the defence takes place. The referee of the host laboratory cannot be a rapporteur.

3. At least one member of the jury must belong to a higher education institution in a European country other than the country where the defence took place.

4. Part of the defence must be conducted in an official language of the European Community other than that of the country where the defence took place. This device is distinct from that of the co-supervision, to which it can be superimposed

This label does not appear on the University Paris-Saclay's doctoral diploma, but it is a strong element for promoting doctoral training internationally

For more information [click here](#).